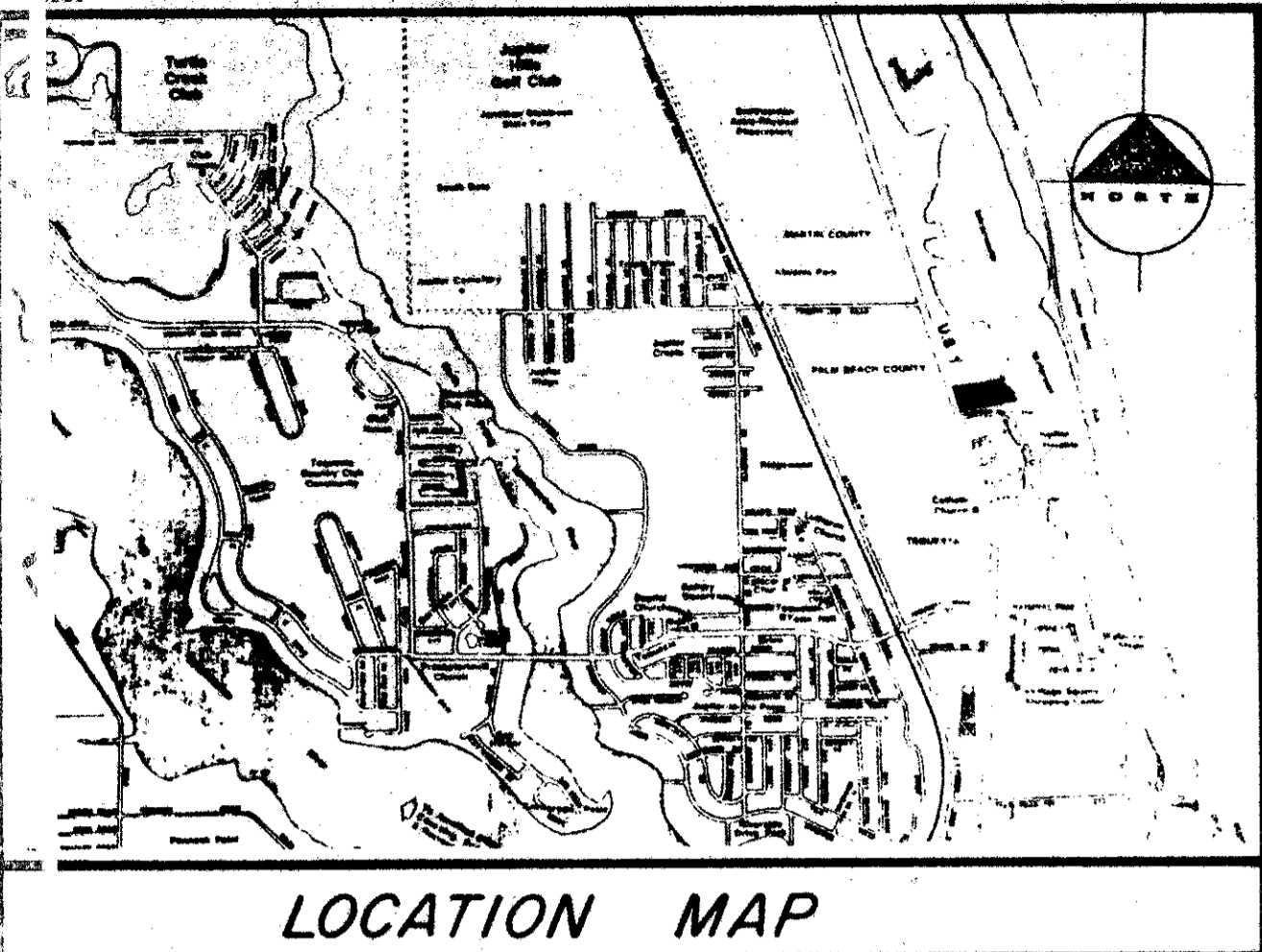


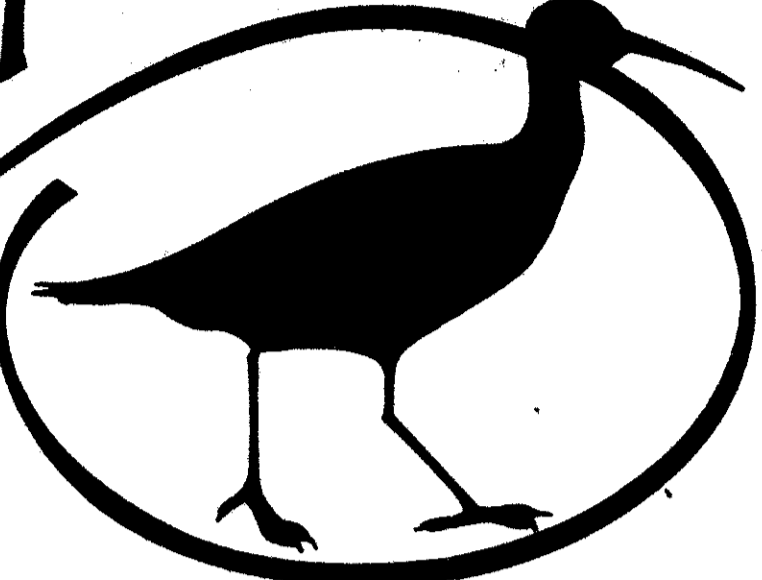
42/120



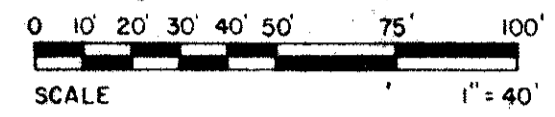
LOCATION MAP

A PLAT OF

Sandpointe Bay



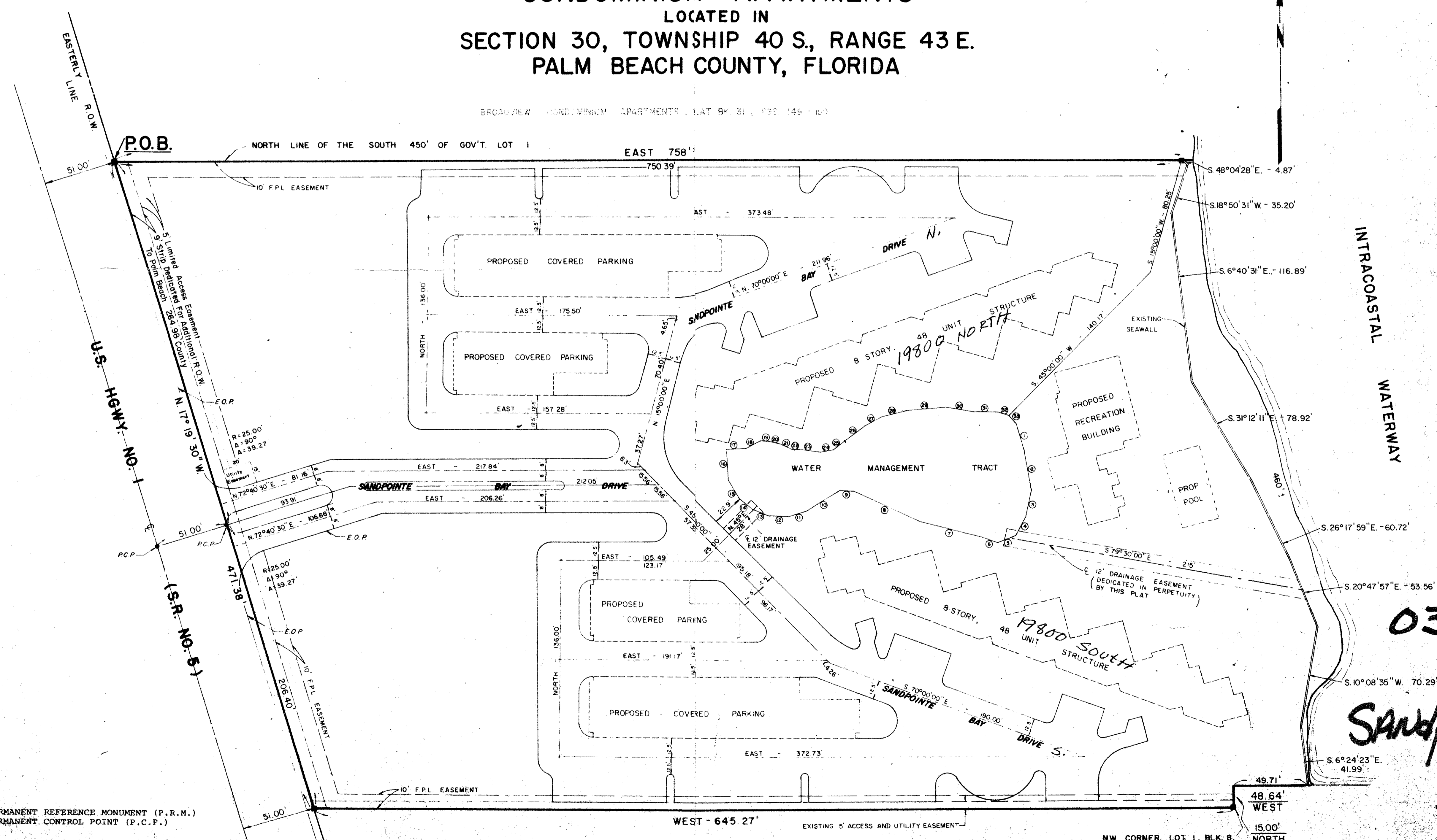
120



MAY, 1981

CONDOMINIUM APARTMENTS LOCATED IN SECTION 30, TOWNSHIP 40 S., RANGE 43 E. PALM BEACH COUNTY, FLORIDA

BROADVIEW CONDOMINIUM APARTMENTS, PLAT 84-31, PGS. 148-149



WATER MANAGEMENT TRACT BOUNDARY

- ① S 16°35'21\" E. - 19.18'
- ② S 10°53'46\" E. - 28.08'
- ③ S 12°16'03\" W. - 19.96'
- ④ S 27°59'49\" W. - 13.81'
- ⑤ S 68°34'00\" W. - 14.48'
- ⑥ N 69°44'09\" W. - 11.60'
- ⑦ N 75°55'15\" W. - 45.97'
- ⑧ N 65°46'43\" W. - 50.70'
- ⑨ N 87°01'05\" W. - 8.61'
- ⑩ S 59°16'42\" W. - 28.79'
- ⑪ S 70°32'30\" W. - 12.27'
- ⑫ N 84°58'28\" W. - 12.26'
- ⑬ N 72°14'25\" W. - 13.87'
- ⑭ N 52°24'21\" W. - 12.42'
- ⑮ N 30°17'36\" W. - 15.26'
- ⑯ N 4°36'10\" W. - 20.51'
- ⑰ N 86°59'31\" E. - 14.08'
- ⑱ N 61°31'24\" E. - 11.96'
- ⑲ S 88°09'24\" E. - 8.69'
- ⑳ S 72°54'20\" E. - 7.16'
- ㉑ S 61°26'56\" E. - 7.37'
- ㉒ S 84°45'53\" E. - 5.10'
- ㉓ S 84°57'31\" E. - 16.47'
- ㉔ N 79°45'20\" E. - 8.66'
- ㉕ N 54°47'46\" E. - 9.15'
- ㉖ N 52°16'24\" E. - 17.42'
- ㉗ N 60°12'28\" E. - 15.00'
- ㉘ N 75°12'52\" E. - 17.18'
- ㉙ N 86°10'55\" E. - 27.34'
- ㉚ S 80°47'53\" E. - 19.75'
- ㉛ N 89°36'43\" E. - 18.03'
- ㉜ S 72°29'13\" E. - 7.61'
- ㉝ S 42°11'25\" E. - 7.63'

0307-000
Sandpointe Bay
42
120

SURVEYOR'S NOTES

MONUMENTATION

- DENOTES PERMANENT REFERENCE MONUMENT (P.R.M.)
- DENOTES PERMANENT CONTROL POINT (P.C.P.)

BEARING BASE

THE EASTERLY RIGHT-OF-WAY LINE OF U.S. HIGHWAY 1 IS TAKEN AS BEING N 17°29'30\" W AND ALL OTHER BEARINGS ARE RELATIVE THERETO.

LINDAHL, BROWNING & FERRARI, INC.
Consulting Engineers, Planners & Surveyors
426 INDIANTOWN ROAD 301 COLORADO AVENUE
JUPITER, FLORIDA 33458 STUART, FLORIDA 33494

2	2
---	---